

WONDERGREECE

Authentic Chania, a travel rich in experiences

Plan Days 5

Experience both the bustling city and the more quiet local hangouts, visit unique places of the province and enjoy wonderful moments of relaxation in one of the houses of Althea maisonettes!



By: Wondergreece Traveler



Day 1

1. Chania International Airport “Ioannis Daskalogiannis”
About region/Access & Useful info
2. Althea Maisonettes
Accommodation
3. Chania
About region/Main cities & villages
4. Venetian harbor of Chania
Culture/Monuments & sights
5. Adespoto music taverna
Food, Shops & Rentals/Food
6. Althea Maisonettes
Accommodation



Day 2

1. Althea Maisonettes
Accommodation
2. Ancient Aptera
Culture/Archaeological sites
3. Itzedin Fortress
Culture/Castles
4. Kalami
Nature/Beaches
5. Kalyves
Nature/Beaches
6. Althea Maisonettes
Accommodation



Day 3

1. Althea Maisonettes
Accommodation
2. Almyrida
Nature/Beaches
3. Vamos
About region/Main cities & villages
4. Agios Georgios Monastery
Culture/Churches & Monasteries
5. Vryses
About region/Main cities & villages
6. Dourakis Winery
Local Products & Gastronomy/Wineries
7. Althea Maisonettes
Accommodation



Day 4

1. Althea Maisonettes
Accommodation



2. Beach of Georgiupolis
Nature/Beaches
3. Kournas Lake
Nature/Lakes
4. Argyroupolis
About region/Main cities & villages
5. Argyroupolis Waterfalls
Nature/Waterfalls
6. Rethymno
About region/Main cities & villages
7. Althea Maisonettes
Accommodation

Day 5

1. Althea Maisonettes
Accommodation
2. Koum Kapi
Culture/Monuments & sights
3. Halepa district
Culture/Monuments & sights
4. Tampakaria
Culture/Monuments & sights
5. Ble
Food, Shops & Rentals/Food
6. The Venizelos' Tombs
Culture/Monuments & sights
7. Kalathas
Nature/Beaches
8. Chania International Airport "Ioannis Daskalogiannis"
About region/Access & Useful info





1. Chania International Airport "Ioannis Daskalogiannis"



About region / Access & Useful info

Απόσταση:

Start -

Χρόνος:

-

GPS: N35.5398404,
W24.1401525



2. Althea Maisonettes



Accommodation

Απόσταση:

by car 22.4km

Χρόνος:

26'

GPS: N35.463511941603926,
W24.133698964942937

Note: Welcome to the serene corner of Althea Maisonettes!
Once settled in your room, it is time for a walk to the picturesque Old Town!



3. Chania



About region / Main cities & villages

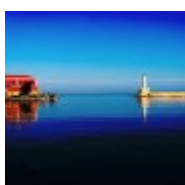
Απόσταση:

by car 15.0km

Χρόνος:

24'

GPS: N35.51606541887963,
W24.01803670000004



4. Venetian harbor of Chania



Culture / Monuments & sights

Location:
Chania

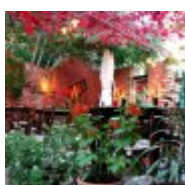
Απόσταση:

on foot 0.5km

Χρόνος:

06'

GPS: N35.51669417547244,
W24.016942358721963



5. Adespoto music taverna



Food, Shops & Rentals / Food

Contact:
T: (+30) 28210 51582

Απόσταση:

by car 0.7km

Χρόνος:

08'

GPS: N35.5163522214745,
W24.02005620478633

Note: Around nightfall head to the old neighborhood of Macheradika. In a magical courtyard this tavern offers tasty appetizers with the accompaniment of live music from all over Greece.



6. Althea Maisonettes

Accommodation



Απόσταση:

by car 15.7km

Χρόνος:

23'

GPS: N35.463511941603926,
W24.133698964942937



1. Althea Maisonettes

Accommodation



Απόσταση:

Start -

Χρόνος:

-

GPS: N35.463511941603926,
W24.133698964942937

Note: First day with some effortless trips nearby!



2. Ancient Aptera

Culture / Archaeological sites



Απόσταση:

on foot 1.0km

Χρόνος:

12'

GPS: N35.46314492469808,
W24.14160075270081

Note: Start your day with a walk to the ancient town of Aptera. The view to the Souda Bay is breath-taking! Looking down you will see another fortress that is unfortunately not open to the public yet.



3. Itzedin Fortress

Culture / Castles



 Location:
Καλάμι

Απόσταση:

by car 5.4km

Χρόνος:

11'

GPS: N35.46929614207563,
W24.150142856097432



4. Kalami

Nature / Beaches



Απόσταση:

by car 0.9km

Χρόνος:

13'

GPS: N35.46966313091183,
W24.141495414233418

Note: A first dip in the sea at this peaceful nearby beach. Enjoy the sun, the clean sea and the Mediterranean fragrances!



5. Kalyves

Nature / Beaches



Απόσταση:

by car 4.8km

Χρόνος:

09'

GPS: N35.45227444847332,
W24.175118404537898

Note: Later on you can visit this seaside village. Walk by the seashore and enjoy fresh fish in one of the many taverns!



6. Althea Maisonettes

Accommodation



Απόσταση:

by car 9.3km

Χρόνος:

12'

GPS: N35.463511941603926,
W24.133698964942937



1. Althea Maisonettes

Accommodation



Απόσταση:

Start -

Χρόνος:

-

GPS: N35.463511941603926,
W24.133698964942937

Note: This day will be full, with many stops in the South and the Cretan mainland!



2. Almyrida

Nature / Beaches



Απόσταση:

by car 13.5km

Χρόνος:

18'

GPS: N35.449206466013116,
W24.201223776721235

Note: Begin your day with an invigorating swim!



3. Vamos

About region / Main cities & villages



Απόσταση:

by car 16.7km

Χρόνος:

23'

GPS: N35.4077376,
W24.19690730000002

Note: Enjoy a lovely stroll in this picturesque village. The community is very well organized regarding agrotouristic activities: cooking classes, olive oil tasting, walks in the area by locals; you can get all the information from the village tourist office.



4. Agios Georgios Monastery

Culture / Churches & Monasteries



Location:

Karydi, Apokoronas

Απόσταση:

by car 9.2km

Χρόνος:

21'

GPS: N35.392094656634235,
W24.20348583942257

Note: Just next to Vamos you will find an until recently abandoned monastery. Its most beautiful part is the ruined oil mills featuring 12 impressive stone arches. This is an ideal spot for many beautiful pictures!



5. Vryses

About region / Main cities & villages



Απόσταση:

by car 2.3km

Χρόνος:

32'

GPS: N35.3750852,
W24.201267599999937

Note: Next stop in this green cool village, built over three rivers. Stop for coffee or lunch at one of the traditional tavernas around the square.



6. Dourakis Winery

Local Products & Gastronomy / Wineries



Note: Visit one of the most important wineries in the area. After a tour around the herb garden, the ancient wine press, the cellars and the production facilities, enjoy some quality wine accompanied by fine local delicacies. If you wish you can have your lunch here upon previous request.

Location:
Alikampos

Contact:
T: (+30) 28250 51761,
6945540696 E:
info@dourakiswinery.gr

Απόσταση:
by car 4.2km

Χρόνος:
07'

GPS: N35.34946460099345,
W24.203034277987626



7. Althea Maisonettes

Accommodation



Απόσταση:
by car 27.4km

Χρόνος:
36'

GPS: N35.463511941603926,
W24.133698964942937



1. Althea Maisonettes

Accommodation



Απόσταση:

Start -

Χρόνος:

-

GPS: N35.463511941603926,
W24.133698964942937

Note: Today head east for a beautiful drive up to the picturesque town of Rethymno.



2. Beach of Georgioupolis

Nature / Beaches



Απόσταση:

by car 28.3km

Χρόνος:

25'

GPS: N35.35864996498173,
W24.269634169897472

Note: An essential stop for a swim to the clear waters of Georgioupolis beach.



3. Kournas Lake

Nature / Lakes



Απόσταση:

by car 5.1km

Χρόνος:

09'

GPS: N35.3303832,
W24.276198199999953

Note: A stop for some coffee and a walk around the only natural lake of the island! Don't forget to taste some traditional kalitsounia and sfakian pies in one of the taverns.



4. Argyroupolis

About region / Main cities & villages



Απόσταση:

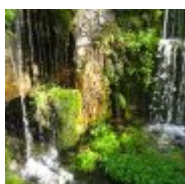
by car 18.7km

Χρόνος:

24'

GPS: N35.2851098,
W24.334485299999983

Note: Nest this unique little village. It features many Venetian architectural elements and remnants of ancient Lappa. Wander around and discover them!



5. Argyroupolis Waterfalls

Nature / Waterfalls



Απόσταση:

by car 0.0km

Χρόνος:

00'

GPS: N35.2851098,
W24.334485299999983

Note: At the downhill side of the village you will find a site of astonishing beauty. Waterfalls, crystal clear waters, towering evergreen trees, fairy-like magnificent nature!



6. Rethymno

About region / Main cities & villages

Απόσταση:

by car 23.1km

Χρόνος:

29'

Note: Welcome to Rethymno! The Venetian history of the place is apparent everywhere you look. Leave the car near Fortezza castle and walk down to the beautiful city. In its many alleys you will find many shops and restaurants.



7. Althea Maisonettes

Accommodation



Απόσταση:

by car 50.1km

Χρόνος:

48'

GPS: N35.463511941603926,
W24.133698964942937



1. Althea Maisonettes

Accommodation

**Απόσταση:**

Start -

Χρόνος:

-

GPS: N35.463511941603926,
W24.133698964942937

Note: Back to Chania for one last visit, this time away from the tourist places and somewhere more quiet and unique.



2. Koum Kapi

Culture / Monuments & sights



Location:
Chania

Απόσταση:

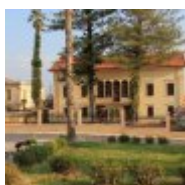
by car 14.9km

Χρόνος:

24'

GPS: N35.51673347259596,
W24.025321579684487

Note: A quieter option for some coffee and a quick swim in the city.



3. Halepa district

Culture / Monuments & sights

**Απόσταση:**

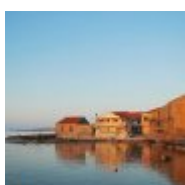
on foot 1.2km

Χρόνος:

15'

GPS: N35.5183088277503,
W24.03668854026182

Note: A short drive to the east will bring you to this beautiful neighborhood. Beautiful neo-classical buildings that once were embassies and residences of the high society of Chania.



4. Tampakaria

Culture / Monuments & sights

**Απόσταση:**

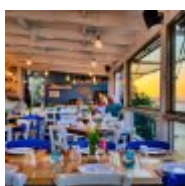
by car 0.4km

Χρόνος:

05'

GPS: N35.51993394040549,
W24.03719840120243

Note: Just a short distance further you will find this magical seaside neighborhood that once housed the tannery of the city. Quiet place with abandoned yet imposing buildings standing next to the sea. Try to find cafe "Oxo Nou", an amazing local hangout.



5. Ble

Food, Shops & Rentals / Food



Contact:
T: (+30) 2821 059198

Απόσταση:

by car 0.5km

Χρόνος:

06'

GPS: N35.517420993593205,
W24.03391165581968

Note: For your lunch we recommend this incredible restaurant. Great delicacies, good wine and an amazing view of the blue sea. Life can be so indulging some times!



6. The Venizelos' Tombs

Culture / Monuments & sights



Απόσταση:

by car 3.7km

Χρόνος:

06'

GPS: N35.52470602443008,
W24.056048966159096

Note: Quick stop for some great photos in this green oasis with panoramic views of the city and the Cretan sea!



7. Kalathas

Nature / Beaches



Απόσταση:

by car 5.8km

Χρόνος:

09'

GPS: N35.554448626578285,
W24.08706493865361

Note: One last swim is a must! Sandy beach, crystal clear waters, beautiful views. The perfect finishing touch for your trip!



8. Chania International Airport "Ioannis Daskalogiannis"

About region / Access & Useful info



Απόσταση:

by car 8.4km

Χρόνος:

14'

GPS: N35.5398404,
W24.1401525

Chania Prefecture

Access

By plane: The district of Chania has the airport 'Ioannis Daskalogiannis ', 14km from the city of Chania, which is daily connected with the airport ' El. Venizelos" in Athens and ' Macedonia ' in Thessaloniki. The frequency of the itineraries varies depending on the season, with the duration of the flight ranging around 40-50 minutes from Athens and approximately one hour and 15 minutes from Thessaloniki. The airport accepts many charter flights during the summer from several European countries such as Germany, Luxembourg, Italy, Denmark, Britain, Norway, Sweden, the Czech Republic and Finland. You can go from the airport to the city of Chania by bus or by taxi.

By ferry: The district of Chania, with the port of Souda (7 km from the city of Chania), has a daily ferry link with the harbor of Piraeus. Most conventional ferries approach the port after 8-9 hours of trip while the high-speed ferries only after 6-7 hours. You can go from the port of Souda to the city of Chania by bus or by taxi. The district, from the port of Kissamos, also has a ferry link with Kythira, Antikythira, Gythio, Kalamata, Piraeus and Monemvasia. Moreover, there is a ferry link from the port of Chora Sfakion with Gavdos Island. The frequency of the itineraries varies depending on the season.

By car - domestic transportation: The major cities in Crete as well as the main towns with the villages of the district are connected by interurban buses, which have frequent itineraries. As an indication, the city of Chania is 138km from Heraklion, 60km from Rethymnon and 204km from Agios Nikolaos. In the district, by using the interurban buses it takes about 2 hours from Chania to Sfakia (southeast of the district), 2 hours to Sougia (south of the district), 90 minutes to Paleohora (southwest of the district), 2 hours to the well-known Elafonisi (southwest of the district) and 45 minutes to the Kasteli (northwest of Chania), where the starting point for the bus itineraries to the villages located in the western part of the district is.

Bus station Chania: Square 1866, Chania, Tel: (+30) 28210 93024

Tel: (+30) 28210 93024

e-ktel.gr

Intercity Buses: Kydonias 73-77, Chania, Tel: (+30) 28210 93306, 93052

www.bus-service-crete-ktel.com

Buses for Kissamos: (+30) 28220 22035

Marina of Kissamos: (+30) 28220 22024

Useful telephone numbers

Health Services

Ambulance: 166, (+30) 28210 28667

General Hospital of Chania: (+30) 28210 22000-9

Health Center of Vamos: (+30) 28253 40401

Health Center of Kandanos: (+30) 28233 40000

Health Center of Kissamos: (+30) 28223 40100

Naval Hospital of Souda: (+30) 28210 82000

Regional Medical of Souda: (+30) 28210 23538

Regional Medical Center of the Airport: (+30) 28210 83820

Regional Medical of Armeni: (+30) 28250 41216

Regional Medical of Aroni: (+30) 28210 63336

Regional Medical of Voukolies: (+30) 28240 31204

Regional Medical of Gerani: (+30) 28210 61268

Regional Medical of Kalives: (+30) 28250 31244

Regional Medical of Kolymvari: (+30) 28240 22204

Regional Medical of Kontopouli: (+30) 28210 65211

Regional Medical of Maleme: (+30) 28210 62360

Regional Medical of Meskla: (+30) 28210 67356

Regional Medical of Kydonia: (+30) 28210 38002

Regional Medical of Tauronitis: (+30) 28240 22395

Regional Medical of Sfakia: (+30) 28250 91214

Municipalities

Municipality of Chania: (+30) 28210 92000

Municipal Tourist Office in Chania:(+30) 28210 36155, 36204

Police Authorities

Police: (+30) 28210 25700

Chania Tourist Police: (+30) 28210 28750, 25931

Port Authorities

Port authority of Chania: (+30) 28210 98888

Port authority of Souda: (+30) 28210 89240

Port authority of Kissamos: (+30) 28220 22024

Port authority of Paleochora: (+30) 28230 41214

Port authority of Sfakia: (+30) 28250 91292

Transportation

Chania Airport: (+30) 28210 83800, 83805

Taxi: 'Hermes': (+30) 28210 98700, 98770

'Kydon': (+30) 28210 94300, 87700

Bus station Chania: (+30) 28210 93024

Intercity Buses: (+30) 28210 93306, 93052

Buses for Kissamos: (+30) 28220 22035

Other

Marina of Kissamos: (+30) 28220 22024

Consulate of Germany: 1 Digeni str , Chania Tel: (+30) 28210 68876

Consulate of Denmark, Norway, Sweden: 107A Eleftherios Venizelos str, Chania,

Tel: (+ 30) 28210 57330

Consulate of Italy: 70 Tzanakaki str, Chania, Tel: (+ 30) 28210-27315

Consulate of France: 1866 Square No 14

Useful Information

Free Wi-Fi: In the district of Chania, there are 52 so far public spots with Free Wireless Broadband Internet Access (free Wi-Fi Hotspots) in central locations. You will find 18 spots in the area of Chania, 10 in Souda, 8 in Kydonia, 5 in Therissos, 2 in Akrotiri and 9 in the region of El. Venizelos. For more information, contact: (+30) 28213 41706, 41755

Rethymno Prefecture

Access

By boat: Rethymno is connected by ferry boats through the port of Chania, Souda. There is a daily ferry link with the harbor of Piraeus, with most ferry boats approaching the port after 8-9 hours trip, while there are high-speed ferries that only take 6-7 hours. From the port of Souda, there are buses departing for Rethymno (53km distance).

By plane: The Prefecture of Rethymno does not have its own airport and is ministered by the airport of Chania (72km from Rethimnon), Heraklion (84km) and Sitia (209km). Then, Rethymno can be easily accessed by bus or by taxi.

By car: The Prefecture of Rethymno and its homonym capital can be easily accessed from the surrounding regions by car. As an indication, Rethymno is 64km from Chania, 140km from Agios Nikolaos and 81km from Heraklion. If you are staying in Rethymno, then you are 52km from Anogia, 55km from Agia Galini, 21km from Argyroupolis, 22km from Panormos, 39km from Plakias and 6km from Platanias.

Domestic transportation

For your transportation, you can use the buses that have frequent itineraries for domestic transportation and link Rethymno with the main cities in the surrounding prefectures as well. Of course, several taxis are available, while there is always the option of renting your own vehicle.

Itineraries Information: (+30) 28310 22212

www.bus-service-crete-ktel.com

Marinas: If you have a private yacht, you can moor in the main marina of Rethymno, which is well-protected from the weather conditions. There, you can replenish with water, electricity and fuel on the pier, while the marina has free wireless Internet, ATMs and several shops.

Useful telephone numbers

Health Services

Rethymno General Hospital: (+30) 28310 87100

Health Center Agia Fotini: (+30) 28333 40000

Health Center Anogia: (+30) 28340 31208

Health Center Perama: (+30) 28343 40000

Health Center Spilio: (+30) 28323 40011

Regional Medical Center Agouseliana: (+30) 28320 51222

Regional Medical Center Armena: (+30) 28310 41222

Regional Medical Center Gonies: (+30) 2810 510051

Regional Medical Center Episkopi: (+30) 28310 61225

Regional Medical Center Zoniana: (+30) 28340 61298

Regional Medical Center Livadia: (+30) 28340 61398

Regional Medical Center Melidoni: (+30) 28340 22032

Regional Medical Center Panormos: (+30) 28340 51214

Regional Medical Center Pigi: (+30) 28310 71001

Regional Medical Center Roustika: (+30) 28310 91214

Municipalities

Municipality of Rethymno: (+30) 28313 41302-4

Municipality of Anogia: (+30) 28340 31207

Municipality of Nikiforos Fokas: (+30) 28310 31208

Municipality of Arkadi: (+30) 28310 72731

Municipality of Lappea: (+30) 28310 61350

Municipality of Sivritos: (+30) 28330 22401

Municipality of Kourites: (+30) 28330 41077

Municipality of Foinika: (+30) 28320 31284

Municipality of Lampis: (+30) 28320 22046

Municipality of Geropotamos: (+30) 28340 22462

Municipality of Kouloukona: (+30) 28340 41392

Police Authority

Police station: (+30) 28310 88155

Tourist police: (+30) 28310 28156, 53450

Port Authority

Port Authority: (+30) 28310 22276

Transportation

Rethymno Bus station: (+30) 28310 22212

Taxi: (+30) 28310 35000, 22316, 28316, 24316, 71900