



WONDERGREECE

Wine tourism in Crete!

Plan Days 7

Discover the particularity of the local varieties, visit important archaeological sites and get acquainted with the unique Cretan hospitality, on a magical journey across the island.



By: Wondergreece Traveler




Day 1

1. Chania International Airport “Ioannis Daskalogiannis” 
About region/Access & Useful info
2. Alcanea Boutique Hotel
Accommodation
3. Venetian harbor of Chania
Culture/Monuments & sights
4. The Archeological Museum of Chania
Culture/Museums
5. Alcanea Boutique Hotel
Accommodation


Day 2

1. Alcanea Boutique Hotel 
Accommodation
2. The dome-shaped tomb in Maleme
Culture/Archaeological sites
3. Anoskeli Winery & Oil Mill
Local Products & Gastronomy/Wineries
4. Tamam
Food, Shops & Rentals/Food
5. Pasteleria de Dana
Food, Shops & Rentals/Food
6. Alcanea Boutique Hotel
Accommodation

Day 3

1. Alcanea Boutique Hotel 
Accommodation
2. Ancient Aptaera
Culture/Archaeological sites
3. Dourakis Winery
Local Products & Gastronomy/Wineries
4. Rethymno
About region/Main cities & villages
5. The archeological site of Eleftherna
Culture/Archaeological sites
6. Scalani Hills Boutari Winery & Residences
Accommodation

Day 4

1. Scalani Hills Boutari Winery & Residences 
Accommodation
2. Nikos Kazantzakis Museum
Culture/Museums

3. Heraklion
About region/Main cities & villages
4. The Fortress "Rocca al Mare" (Koules)
Culture/Castles
5. Scalani Hills Boutari Winery & Residences
Accommodation


Day 5

1. Scalani Hills Boutari Winery & Residences
Accommodation 
2. Knossos Palace
Culture/Archaeological sites
3. Elounda
About region/Main cities & villages
4. Spinalonga
Culture/Monuments & sights
5. Cressa Ghitonia Village
Accommodation

Day 6

1. Cressa Ghitonia Village
Accommodation 
2. Toplou Monastery Winery
Local Products & Gastronomy/Wineries
3. Ancient Itanos
Culture/Archaeological sites
4. Vai palm grove
Nature/Forests
5. Sitia
About region/Main cities & villages
6. Kazarma Fortress
Culture/Castles
7. Cressa Ghitonia Village
Accommodation

Day 7

1. Cressa Ghitonia Village
Accommodation 
2. Sitia Public Airport
About region/Access & Useful info



1. Chania International Airport "Ioannis Daskalogiannis"



About region / Access & Useful info

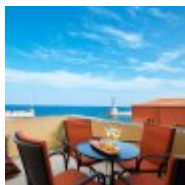
Απόσταση:

Start -

Χρόνος:

-

GPS: N35.5398404,
W24.1401525



2. Alcanea Boutique Hotel



Accommodation

Απόσταση:

by car 15.3km

Χρόνος:

23'

GPS: N35.517930266281034,
W24.01600732698364

Note: Welcome to Alcanea Boutique Hotel! Once settled in to your room, it's time for the first walk around the Venetian Harbor and the Old Town!



3. Venetian harbor of Chania



Culture / Monuments & sights

Location:
Chania

Απόσταση:

by car 0.2km

Χρόνος:

02'

GPS: N35.51669417547244,
W24.016942358721963



4. The Archeological Museum of Chania



Culture / Museums

Location:
Chania

Contact:

Tel: (+30) 28210 90334

Απόσταση:

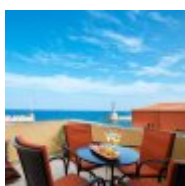
on foot 0.4km

Χρόνος:

04'

GPS: N35.51549805084955,
W24.01756553002474

Note: Whether you are a museum lover or not, don't miss a visit to the Archeological Museum of Chania. The collection covers the cultural heritage of the city from the Neolithic period up to the time of the Roman occupation. Moreover, the building of the museum itself is a gem of Venetian architecture.



5. Alcanea Boutique Hotel



Accommodation

Απόσταση:

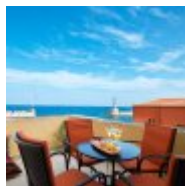
on foot 1.1km

Χρόνος:

12'

GPS: N35.517930266281034,
W24.01600732698364

Note: After your stroll enjoy the enchanting colors of the dusk from the courtyard of Alcanea Boutique Hotel. The bar has a good sample of the Cretan vineyard. Good wine and delicious meze overlooking the Old Harbor and the lighthouse!



1. Alcanea Boutique Hotel

Accommodation

**Απόσταση:**

Start -

Χρόνος:

-

GPS: N35.517930266281034,
W24.01600732698364

Note: The Alcanea Café offers magnificent view overlooking the Old Harbor! Start your day with a rich breakfast prepared with Cretan products of unique taste and quality. In this corner of the world the aromas and the flavors are more pronounced!



2. The dome-shaped tomb in Maleme

Culture / Archaeological sites

**Απόσταση:**

by car 20.2km

Χρόνος:

26'

GPS: N35.52343736929785,
W23.834087327941916

Note: Today head west for a visit to the winery of Anoskeli. On route however don't miss a stop in this imposing archaeological site only a few people know.



3. Anoskeli Winery & Oil Mill

Local Products & Gastronomy / Wineries



Location:
Anoskeli

Contact:
T: (+30) 28240 83127

Απόσταση:

by car 31.6km

Χρόνος:

36'

GPS: N35.45991634758184,
W23.77597483306579

Note: Take a tour around the facilities of Anoskeli winery and oil mill. Learn about the wine and olive oil production processes and taste quality wine and olive oil of excellent quality. If you wish you can have your lunch here upon previous request.



4. Tamam

Food, Shops & Rentals / Food



Contact:
T: (+30) 28210 96080

Απόσταση:

by car 31.4km

Χρόνος:

33'

GPS: N35.51659684860535,
W24.016397911045033

Note: For your evening meal we recommend Tamam restaurant. It is a local hangout for years with flavors inspired by the Cretan and the Ottoman cuisine. Here you can taste selected Greek wines mainly from the Cretan vineyard.



5. Pasteleria de Dana

Food, Shops & Rentals / Food



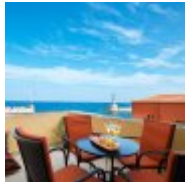
Contact:
T: (+30) 2821 302801

Απόσταση:
by car 0.5km

Χρόνος:
06'

GPS: N35.51584384119054,
W24.018152788325892

Note: If you find yourselves yearning for a dessert this is the place to come. It is one of the finest patisseries of the city! Everything you try here is exceptional!



6. Alcanea Boutique Hotel

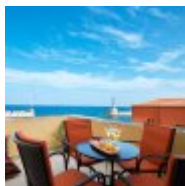
Accommodation



Απόσταση:
on foot 0.7km

Χρόνος:
08'

GPS: N35.517930266281034,
W24.01600732698364



1. Alcanea Boutique Hotel

Accommodation



Απόσταση:

Start -

Χρόνος:

-

GPS: N35.517930266281034,
W24.01600732698364

Note: Bid farewell to the Old Harbor and the city of Chania. The journey continues eastward!



2. Ancient Aptera

Culture / Archaeological sites



Απόσταση:

by car 19.0km

Χρόνος:

26'

GPS: N35.46314492469808,
W24.14160075270081

Note: A brief visit to the ancient site of Aptera is a must! This is an important archaeological site with panoramic view of the Gulf of Souda bay. Prepare your cameras for lots of pictures!




3. Dourakis Winery

Local Products & Gastronomy / Wineries



 Location:
Alikampos

 Contact:
T: (+30) 28250 51761,
6945540696 E:
info@dourakiswinery.gr

Note: Visit one of the most important wineries in the area. After a tour around the herb garden, the ancient wine press, the cellars and the production facilities, enjoy some quality wine accompanied by fine local delicacies. If you wish you can have your lunch here upon previous request.

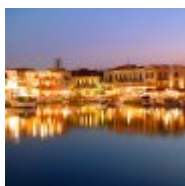
Απόσταση:

by car 28.4km

Χρόνος:

30'

GPS: N35.34946460099345,
W24.203034277987626



4. Rethymno

About region / Main cities & villages

Απόσταση:

by car 32.1km

Χρόνος:

42'

Note: Welcome to Rethymno! The Venetian history of the place is apparent everywhere you look. Leave the car near Fortezza castle and walk down to the beautiful city. In its many alleys you will find many shops ideal for shopping, whereas at the sea front and the picturesque marina you can relax while drinking your coffee in one of the many local hangouts.



5. The archeological site of Eleftherna

Culture / Archaeological sites



Απόσταση:

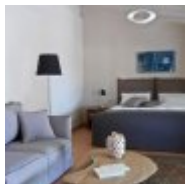
by car 28.4km

Χρόνος:

46'

GPS: N35.33275200578375,
W24.676487672552526

Note: Continue your journey east to visit the archaeological site of Eleftherna. Wander among the ruins of this once thriving city and visit the museum which has recently opened its doors to the public.



6. Scalani Hills Boutari Winery & Residences

Accommodation



Απόσταση:

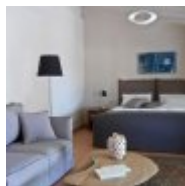
by car 8.9km

Χρόνος:

12'

GPS: N35.282623565080435,
W25.18387113873132

Note: The dusk will find you at the Boutari estate. Once settled in your room, take a walk around the vineyards and dine at the winery restaurant surrounded by the sounds and scents of the Cretan land...



1. Scalani Hills Boutari Winery & Residences

Accommodation



Απόσταση:

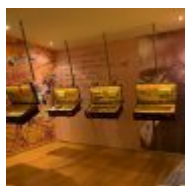
Start -

Χρόνος:

-

GPS: N35.282623565080435,
W25.18387113873132

Note: During your stay here you will have the chance to indulge yourself to the art of wine tasting with wines of limited production of the Boutari Estate. If you also wish to familiarize yourself with the Cretan gastronomy you can attend cooking classes held in the winery upon request.



2. Nikos Kazantzakis Museum

Culture / Museums



Location:
Mirtia

Contact:
Tel: (+30) 2810 741689,
742451

Απόσταση:

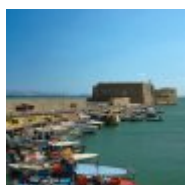
by car 7.2km

Χρόνος:

11'

GPS: N35.23549017229578,
W25.21044173793939

Note: Just 10 minutes away from the estate, a museum dedicated to a great figure of world literature. The museum exhibition is well presented and contains many original manuscripts and first editions of the author's work.



3. Heraklion

About region / Main cities & villages



Απόσταση:

by car 16.0km

Χρόνος:

22'

GPS: N35.3387352,
W25.144212599999946

Note: Welcome to the capital city of the island! Walk around the pedestrian area of the center or along the modern coastal road towards the Fortress "Koules". Relax and enjoy the sunset and the sea breeze.



4. The Fortress "Rocca al Mare" (Koules)

Culture / Castles



Location:
Heraklion

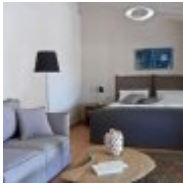
Απόσταση:

by car 1.5km

Χρόνος:

20'

GPS: N35.34461633871706,
W25.137024279840034



5. Scalani Hills Boutari Winery & Residences

Accommodation



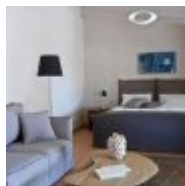
Απόσταση:

by car 10.0km

Χρόνος:

13'

GPS: N35.282623565080435,
W25.18387113873132



1. Scalani Hills Boutari Winery & Residences

Accommodation



Απόσταση:

Start -

Χρόνος:

-

GPS: N35.282623565080435,
W25.18387113873132

Note: Leave the beautiful Boutari estate and head east towards Lasithi. One last stop before leaving Heraklion: The Minoan Palace of Knossos!



2. Knossos Palace

Culture / Archaeological sites



Location:
Knossos

Contact:
Tel: (+30) 2810 231940,
226470, 226092, 224630

Απόσταση:

by car 4.1km

Χρόνος:

09'

GPS: N35.29796377247185,
W25.1632998637848



3. Elounda

About region / Main cities & villages



Απόσταση:

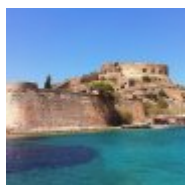
by car 73.4km

Χρόνος:

1h07'

GPS: N35.2613505,
W25.72341640000002

Note: The journey continues with a visit to Elounda. This place is a major tourist resort and not without a reason. Across the city lies the famous island of Spinalonga, which you can visit by boat.



4. Spinalonga

Culture / Monuments & sights



Απόσταση:

by car 2.7km

Χρόνος:

08'

GPS: N35.2722222,
W25.748611100000062

Note: This island hosts one of the most important Mediterranean sea forts of the past. It is also known for its modern history, since it was used as a place of exile for lepers. Stroll around the abandoned buildings and let your imagination lead you to a different era.



5. Cressa Ghitonia Village

Accommodation



Απόσταση:

by car 29.5km

Χρόνος:

39'

GPS: N35.15223198991665,
W25.92365523495289

Note: Last resort for your journey - the absolute rejuvenation and relaxation retreat! Close the day with a glass of fine wine at the terrace of your room with the panoramic view of the Aegean Sea and the surrounding mountains.



1. Cressa Ghitonia Village

Accommodation

**Απόσταση:**

Start -

Χρόνος:

-

GPS: N35.15223198991665,
W25.92365523495289

Note: Start your day with a full breakfast and why not a refreshing massage with grains of salt and olive oil in the spa area of the hotel.



2. Toplou Monastery Winery

Local Products & Gastronomy / Wineries

**Contact:**

T: (+30) 28430 29630

Απόσταση:

by car 44.5km

Χρόνος:

59'

GPS: N35.21933629499603,
W26.216812673155232

Note: Continue your day with a visit to the historic monastery of Toplou. The monks will show you around the vineyards and the facilities of the traditional winery of the monastery. The wine made here is organic and of excellent quality. Enjoy!



3. Ancient Itanos

Culture / Archaeological sites

**Location:**

Palekastro

Contact:

Tel: (+30) 28430 61043, (+30) 6936731605

Απόσταση:

by car 2.2km

Χρόνος:

04'

GPS: N35.26351243810338,
W26.264164547885116

Note: Leaving the monastery do not miss the chance for a visit to the nearby archaeological site of Itanos. The ancient ruins are spread along the coast, creating a unique and picturesque atmosphere.



4. Vai palm grove

Nature / Forests

**Απόσταση:**

by car 2.2km

Χρόνος:

26'

GPS: N35.25483662733465,
W26.261109149707067

Note: Really close to Itanos there is a place of incredible natural beauty and character - the largest palm forest of Europe! Its magical picture is being complemented by the long sandy beach that stretches as far as your eye can see.



5. Sitia

About region / Main cities & villages



Απόσταση:

by car 23.3km

Χρόνος:

31'

GPS: N35.2086503,
W26.105232900000033

Note: Later on walk around the picturesque port of Sitia and enjoy the sunset from the Kazarma Fortress which lies above. The view and atmosphere there constitute the perfect epilogue for your trip.



6. Kazarma Fortress

Culture / Castles



Απόσταση:

by car 0.4km

Χρόνος:

04'

GPS: N35.21101710706184,
W26.10753959975284



7. Cressa Ghitonia Village

Accommodation



Απόσταση:

by car 29.7km

Χρόνος:

39'

GPS: N35.15223198991665,
W25.92365523495289



1. Cressa Ghitonia Village

Accommodation



Απόσταση:

Start -

Χρόνος:

-

GPS: N35.15223198991665,
W25.92365523495289

Note: We hope that this trip will be leaving you full of memories, rich in aromas, flavors and culture. We would love to see you again on our island. Farewell!

2. Sitia Public Airport

About region / Access & Useful info



Απόσταση:

on foot 1.5km

Χρόνος:

18'

GPS: N35.214683,
W26.100326999999993

Chania Prefecture

Access

By plane: The district of Chania has the airport 'Ioannis Daskalogiannis ', 14km from the city of Chania, which is daily connected with the airport ' El. Venizelos" in Athens and ' Macedonia ' in Thessaloniki. The frequency of the itineraries varies depending on the season, with the duration of the flight ranging around 40-50 minutes from Athens and approximately one hour and 15 minutes from Thessaloniki. The airport accepts many charter flights during the summer from several European countries such as Germany, Luxembourg, Italy, Denmark, Britain, Norway, Sweden, the Czech Republic and Finland. You can go from the airport to the city of Chania by bus or by taxi.

By ferry: The district of Chania, with the port of Souda (7 km from the city of Chania), has a daily ferry link with the harbor of Piraeus. Most conventional ferries approach the port after 8-9 hours of trip while the high-speed ferries only after 6-7 hours. You can go from the port of Souda to the city of Chania by bus or by taxi. The district, from the port of Kissamos, also has a ferry link with Kythira, Antikythira, Gythio, Kalamata, Piraeus and Monemvasia. Moreover, there is a ferry link from the port of Chora Sfakion with Gavdos Island. The frequency of the itineraries varies depending on the season.

By car - domestic transportation: The major cities in Crete as well as the main towns with the villages of the district are connected by interurban buses, which have frequent itineraries. As an indication, the city of Chania is 138km from Heraklion, 60km from Rethymnon and 204km from Agios Nikolaos. In the district, by using the interurban buses it takes about 2 hours from Chania to Sfakia (southeast of the district), 2 hours to Sougia (south of the district), 90 minutes to Paleohora (southwest of the district), 2 hours to the well-known Elafonisi (southwest of the district) and 45 minutes to the Kasteli (northwest of Chania), where the starting point for the bus itineraries to the villages located in the western part of the district is.

Bus station Chania: Square 1866, Chania, Tel: (+30) 28210 93024

Tel: (+30) 28210 93024

e-ktel.gr

Intercity Buses: Kydonias 73-77, Chania, Tel: (+30) 28210 93306, 93052

www.bus-service-crete-ktel.com

Buses for Kissamos: (+30) 28220 22035

Marina of Kissamos: (+30) 28220 22024

Useful telephone numbers

Health Services

Ambulance: 166, (+30) 28210 28667

General Hospital of Chania: (+30) 28210 22000-9

Health Center of Vamos: (+30) 28253 40401

Health Center of Kandanos: (+30) 28233 40000

Health Center of Kissamos: (+30) 28223 40100

Naval Hospital of Souda: (+30) 28210 82000

Regional Medical of Souda: (+30) 28210 23538

Regional Medical Center of the Airport: (+30) 28210 83820

Regional Medical of Armeni: (+30) 28250 41216

Regional Medical of Aroni: (+30) 28210 63336

Regional Medical of Voukolies: (+30) 28240 31204

Regional Medical of Gerani: (+30) 28210 61268

Regional Medical of Kalives: (+30) 28250 31244

Regional Medical of Kolymvari: (+30) 28240 22204

Regional Medical of Kontopouli: (+30) 28210 65211

Regional Medical of Maleme: (+30) 28210 62360

Regional Medical of Meskla: (+30) 28210 67356

Regional Medical of Kydonia: (+30) 28210 38002

Regional Medical of Tauronitis: (+30) 28240 22395

Regional Medical of Sfakia: (+30) 28250 91214

Municipalities

Municipality of Chania: (+30) 28210 92000

Municipal Tourist Office in Chania:(+30) 28210 36155, 36204

Police Authorities

Police: (+30) 28210 25700

Chania Tourist Police: (+30) 28210 28750, 25931

Port Authorities

Port authority of Chania: (+30) 28210 98888

Port authority of Souda: (+30) 28210 89240

Port authority of Kissamos: (+30) 28220 22024

Port authority of Paleochora: (+30) 28230 41214

Port authority of Sfakia: (+30) 28250 91292

Transportation

Chania Airport: (+30) 28210 83800, 83805

Taxi: 'Hermes': (+30) 28210 98700, 98770

'Kydon': (+30) 28210 94300, 87700

Bus station Chania: (+30) 28210 93024

Intercity Buses: (+30) 28210 93306, 93052

Buses for Kissamos: (+30) 28220 22035

Other

Marina of Kissamos: (+30) 28220 22024

Consulate of Germany: 1 Digeni str , Chania Tel: (+30) 28210 68876

Consulate of Denmark, Norway, Sweden: 107A Eleftherios Venizelos str, Chania,

Tel: (+ 30) 28210 57330

Consulate of Italy: 70 Tzanakaki str, Chania, Tel: (+ 30) 28210-27315

Consulate of France: 1866 Square No 14

Useful Information

Free Wi-Fi: In the district of Chania, there are 52 so far public spots with Free Wireless Broadband Internet Access (free Wi-Fi Hotspots) in central locations. You will find 18 spots in the area of Chania, 10 in Souda, 8 in Kydonia, 5 in Therissos, 2 in Akrotiri and 9 in the region of El. Venizelos. For more information, contact: (+30) 28213 41706, 41755

Rethymno Prefecture

Access

By boat: Rethymno is connected by ferry boats through the port of Chania, Souda. There is a daily ferry link with the harbor of Piraeus, with most ferry boats approaching the port after 8-9 hours trip, while there are high-speed ferries that only take 6-7 hours. From the port of Souda, there are buses departing for Rethymno (53km distance).

By plane: The Prefecture of Rethymno does not have its own airport and is ministered by the airport of Chania (72km from Rethimnon), Heraklion (84km) and Sitia (209km). Then, Rethymno can be easily accessed by bus or by taxi.

By car: The Prefecture of Rethymno and its homonym capital can be easily accessed from the surrounding regions by car. As an indication, Rethymno is 64km from Chania, 140km from Agios Nikolaos and 81km from Heraklion. If you are staying in Rethymno, then you are 52km from Anogia, 55km from Agia Galini, 21km from Argyroupolis, 22km from Panormos, 39km from Plakias and 6km from Platanias.

Domestic transportation

For your transportation, you can use the buses that have frequent itineraries for domestic transportation and link Rethymno with the main cities in the surrounding prefectures as well. Of course, several taxis are available, while there is always the option of renting your own vehicle.

Itineraries Information: (+30) 28310 22212

www.bus-service-crete-ktel.com

Marinas: If you have a private yacht, you can moor in the main marina of Rethymno, which is well-protected from the weather conditions. There, you can replenish with water, electricity and fuel on the pier, while the marina has free wireless Internet, ATMs and several shops.

Useful telephone numbers

Health Services

Rethymno General Hospital: (+30) 28310 87100

Health Center Agia Fotini: (+30) 28333 40000

Health Center Anogia: (+30) 28340 31208

Health Center Perama: (+30) 28343 40000

Health Center Spilio: (+30) 28323 40011

Regional Medical Center Agouseliana: (+30) 28320 51222

Regional Medical Center Armena: (+30) 28310 41222

Regional Medical Center Gonies: (+30) 2810 510051

Regional Medical Center Episkopi: (+30) 28310 61225

Regional Medical Center Zoniana: (+30) 28340 61298

Regional Medical Center Livadia: (+30) 28340 61398

Regional Medical Center Melidoni: (+30) 28340 22032

Regional Medical Center Panormos: (+30) 28340 51214

Regional Medical Center Pigi: (+30) 28310 71001

Regional Medical Center Roustika: (+30) 28310 91214

Municipalities

Municipality of Rethymno: (+30) 28313 41302-4

Municipality of Anogia: (+30) 28340 31207

Municipality of Nikiforos Fokas: (+30) 28310 31208

Municipality of Arkadi: (+30) 28310 72731

Municipality of Lappea: (+30) 28310 61350

Municipality of Sivritos: (+30) 28330 22401

Municipality of Kourites: (+30) 28330 41077

Municipality of Foinika: (+30) 28320 31284

Municipality of Lampis: (+30) 28320 22046

Municipality of Geropotamos: (+30) 28340 22462

Municipality of Kouloukona: (+30) 28340 41392

Police Authority

Police station: (+30) 28310 88155

Tourist police: (+30) 28310 28156, 53450

Port Authority

Port Authority: (+30) 28310 22276

Transportation

Rethymno Bus station: (+30) 28310 22212

Taxi: (+30) 28310 35000, 22316, 28316, 24316, 71900

Heraklion Prefecture

Access

By boat: There are two departures daily from Piraeus throughout the year, four during summer time. The journey takes eight hours, and the ships are large and comfortable. In summer time there is connection with the Cyclades (Anafi, Santorini, Milos, Mykonos, Paros, Ios) and the Dodecanese (Halki, Karpathos, Kasos, Rhodes). There is also scheduled service connecting Heraklion to Sitia. The frequency of departures varies depending on the season.

By plane: Heraklion has the largest airport in Crete, the international airport "N. Kazantzakis" and serves flights from Athens Eleftherios Venizelos Airport (a flight of fifty minutes) and from Thessaloniki Macedonia Airport (a flight of an hour and fifteen minutes). Heraklion is also connected by air with Santorini, Mykonos, Paros and Rhodes as well as the United Kingdom, Italy, Russia, Germany, etc., with a large number of charter flights. The frequency of service varies depending on the season.

Tel: (+30) 281 397 800

www.heraklion-airport.info

By car: The prefecture of Heraklion and Heraklion city have easy road access from the surrounding prefectures. Indicatively Heraklion is 138km. from Chania, 65km. from Agios Nikolaos, 79km. from Rethymnon and 68 km. from Elounda. If you are in Heraklion you are 5km away from Knossos, 36km. from Anogia, 60km. from Phaistos, 27km. from Hersonissos, 34km. from Malia and 70km. from Matala.

Domestic transportation

For transportation you can use the bus service that operates both within the county as well as connecting Heraklion with the big cities in the surrounding prefectures.

Information services: (+30) 2810 245020, 246530, 255965

www.ktelherlas.gr

Useful telephone numbers

Health Services

University Hospital: (+30) 2810 392111

Venizelio - Pananio Hospital: (+30) 2810 368000

Agia Varvara Health Center: (+30) 28940 22222

Ano Viannou Health Center: (+30) 28950 22626

Arkalohori Health Center: (+30) 28910 23013

Kastelli Health Center: (+30) 28910 29400

Mires Health Center: (+30) 28920 23378

Haraka Health Center: (+30) 28930 22545

Municipalities

Municipality of Heraklion: (+30) 2810 399 399

Municipality of Hersonissos: (+30) 28970 30000

Municipality of Kastelli: (+30) 28910 29360

Municipality of Arkalochori: (+30) 28913 40300

Municipality of Timpaki: (+30) 28920 51250

Police Authority

Heraklion Police Station: (+30) 2810 274010

Hersonissos Police Station: (+30) 29 338 2810

Kastelli Police Station: (+30) 32 100 2810

Heraklion Tourist Police: (+30) 2810 274 046

Port Authority

Port Authority: (+30) 2810 244912

Transportation

Airport: (+30) 2810 397800
Bus Station: (+30) 2810 255 965
Taxis: (+30) 2810 210 102

Lasithi Prefecture

Access

By boat: In Sitia, there is a connection with: Kasos, Heraklion, Piraeus, Santorini, Karpathos, Rhodes, and Milos. In Agios Nikolaos, there is no connection with any port, so the ferry link of the district is in the port of Sitia and then, Heraklion. Port Authority of Sitia: (+30) 28430 22310

By plane: The district of Lasithi has an airport in Sitia that receives domestic and charter flights. There are itineraries that link Sitia with the El. Venizelos airport in Athens, Heraklion, Preveza, Alexandroupoli, Kasos, Rhodes and Karpathos. The frequency of the itineraries varies depending on the season. Sitia airport: (+30) 28430 24424

By car: If you are visiting Crete, you can easily visit Lasithi prefecture. The capital of the district, Agios Nikolaos, is 202km from Chania, 140km from Rethymnon and 64km from Heraklion.

By bus: There is a dense network of interurban buses' itineraries that link Agios Nikolaos with the capitals of the other districts of Crete and some important places like Malia.

www.ktelherlas.gr/

www.agiosnikolaos.in/transportation-ktel.html

Local transportations

Local transportation could be either by car or by interurban buses that provide frequent itineraries to the cities and the large villages of the district. As an indication, Agios Nikolaos is 94km from Vai, 49km from the Lasithi Plateau, 70km from Sitia, 89km from Palekastro and 34km from Ierapetra.

www.agiosnikolaos.in/transportation-ktel.html

In Agios Nikolaos, Elounda and Plaka, there are boats to Spinalonga Islet. Moreover, in Ierapetra, there are daily itineraries to Chrissi Islet and other nearby beaches. In Makris Gialos, one-day excursions to Lefki Islet are organized.

Marinas: Agios Nikolaos has an organized marina where you can refuel and find whatever you need.

Useful telephone numbers

Health Services

Agios Nikolaos General Hospital: (+30) 2841343000

Ierapetra Health Center: (+30) 28423 40122

Neapolis Health Center: (+30) 28410 90830

Sitia Health Center: (+30) 28433 40100

Tzermiadou Health Center: (+30) 28440 22602

Regional Medical Center of Agios Georgios: (+30) 28440 31205

Regional Medical Center of Vrachasi: (+30) 28410 32512

Regional Medical Center of Elounda: (+30) 28410 41563

Regional Medical Center of Kritsa: (+30) 28410 51216

Regional Medical Center of Luma: (+30) 28410 42620

Regional Medical Center of Fournis (+30) 28410 32691

Regional Medical Center Houmeriako: (+30) 28410 31791

Regional Medical Center Psychro: (+30) 28440 31100

Municipalities

Municipality of Agios Nikolaos: (+30) 28413 40100

Municipality of Ierapetra: (+30) 28420 90000

Municipality of Sitia: (+30) 28430 22271

Police Authority

Tourist Police: (+30) 28410 91409

Police station: (+30) 28410 91406, 91402

Port Authority

Sitia Port Authority: (+30) 28410 22312

Ierapetra Port Authorities: (+30) 28420 89996

Transportations

Sitia Airport: (+30) 28430 24424

Heraklion Airport: (+30) 2810 397 800

Bus Station: (+30) 28410 22234, 28284

Taxis: (+30) 28410 24000

Other

Marina (Agios Nikolaos): (+30) 28410 82384