



WONDERGREECE

If you are in love you will go at least once in Milos!

Plan Dates 2015-07-16

An island 'naturally romantic'. An ideal place for romantic walks, sunsets and swimming in exotic waters!

By: Christina Koraki



Day 1

1. Adamadas (Diamond) 
About region/Main cities & villages
2. Plaka
About region/Main cities & villages
3. Milos Archaeological Museum
Culture/Museums
4. Castle of Plaka
Culture/Castles


Day 2

1. Klima 
About region/Main cities & villages
2. Ancient Roman Theater
Culture/Archaeological sites
3. Sarakiniko
Nature/Beaches
4. Scuba Diving
Interests & activities/Scuba Diving
5. Navagio (Shipwreck)
Culture/Monuments & sights

Day 3

1. Pollonia 
About region/Main cities & villages
2. Papafragas
Nature/Beaches
3. Papafraga Cave
Nature/Caves
4. Glaronisia
Culture/Monuments & sights
5. Chorio (Kimolos)
About region/Main cities & villages

Day 4

1. Paleohori 
About region/Main cities & villages
2. Kipos (Garden)
Nature/Beaches
3. Kleftiko
Nature/Beaches
4. Tsigrado
Nature/Beaches
5. Firiplaka
Nature/Beaches



1. Adamadas (Diamond)

About region / Main cities & villages



Απόσταση:

Start -

Χρόνος:

-

GPS: N36.726446462930085,
W24.44488837744143

Note: The Adamadas is the main port of Milos and the first image that you will see when you arrive in the island by boat. The white houses along the narrow streets filled with shops compose a picture of Cycladic beauty. Upon arriving at the port be sure to drink a coffee in nice cafes !!



2. Plaka

About region / Main cities & villages



Απόσταση:

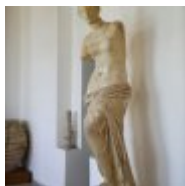
by car 4.0km

Χρόνος:

09'

GPS: N36.74446818487848,
W24.423516536010766

Note: Plaka is the capital of the island and has narrow streets, small traditional tavernas and cafes. However what really offers Plaka is incredible and magical view of the bay of Milos. Ideal to enjoy this view will be a dinner in a traditional tavern!!




3. Milos Archaeological Museum

Culture / Museums



 Location:
Plaka

 Contact:
Tel: (+30) 22870 21620

Απόσταση:

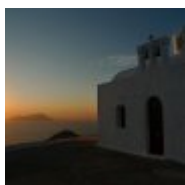
on foot 0.2km

Χρόνος:

03'

GPS: N36.74338493752628,
W24.424213910354638

Note: The Archaeological Museum of Milos is located in Plaka, housed in a beautiful neoclassical building. While walking in Plaka do not miss the Archeological museum where you will learn very interesting things about the history of the island and also admire the replica of Venus De Milo!!



4. Castle of Plaka

Culture / Castles



 Location:
Plaka

Απόσταση:

on foot 0.3km

Χρόνος:

03'

GPS: N36.74608443027914,
W24.421714091552758

Note: At the top of the hill of Plaka is the imposing castle from which you can enjoy an idyllic sunset with wonderful colors and panoramic view over the bay of the island and to neighboring islands. Romance in forte!!



1. Klima

About region / Main cities & villages



Απόσταση:

Start -

Χρόνος:

-

GPS: N36.73538906750589,
W24.420512461914086

Note: Klima is one of the most famous and traditional villages on Milos with picturesque and colorful houses. It is an area worth visiting and photographing!!



2. Ancient Roman Theater

Culture / Archaeological sites



Απόσταση:

by car 2.2km

Χρόνος:

26'

GPS: N36.737727730723655,
W24.421220565094018

Note: The Roman Theatre is located in a prominent position on the hillside and offers magnificent views of the harbor and very good acoustics to exchange vows of love! :)



3. Sarakiniko

Nature / Beaches



Απόσταση:

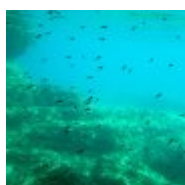
by car 5.5km

Χρόνος:

13'

GPS: N36.743230186656376,
W24.4596512558594

Note: The eroded volcanic rocks penetrate the emerald sea creating small and large caves, and the lack of green, combined with the white rocks and the intense reflection of light, creating a landscape reminiscent of the moon and an unforgettable experience for those who will visit it.



4. Scuba Diving

Interests & activities / Scuba Diving

Απόσταση:

not available -

Χρόνος:

-

Note: Sarakiniko is an incredible landscape great for scuba diving. A wonderful experience where you will discover the marine treasure of Milos .



5. Navagio (Shipwreck)

Culture / Monuments & sights



Απόσταση:

not available -

Χρόνος:

-

GPS: N36.74350529909824,
W24.4570763352051

Note: Right next to Sarakiniko is the Shipwreck of Milos.



1. Pollonia

About region / Main cities & villages



Απόσταση:

Start -

Χρόνος:

-

GPS: N36.76234815371499,
W24.518702769531274

Note: Pollonia is a picturesque fishing village built around a beautiful bay on the northeastern tip of the island. From Pollonia starts excursion boats for Cave Papafraga - Kimolos and Glaronissia offering a breathtaking and unique experience for the traveler!!



2. Papafragas

Nature / Beaches



Απόσταση:

on foot 2.2km

Χρόνος:

28'

GPS: N36.75371815055684,
W24.503167414917016

Note: Papafragas is a beach deep sea cave where you can swim in turquoise waters between greyish rocks leading to the open sea. The beach is small size and to get there you have to get off a steep carving on the rock.



3. Papafraga Cave

Nature / Caves



Απόσταση:

on foot 0.0km

Χρόνος:

00'

GPS: N36.7533536,
W24.503433299999983

Note: The next stop of the boat will be the magical Cave Papafragas that will fill you with spectacular images and will offer you some of the best pictures of your holiday in this beautiful island.



4. Glaronisia

Culture / Monuments & sights



Απόσταση:

on foot 2.2km

Χρόνος:

27'

GPS: N36.76413592140088,
W24.486430430664086

Note: Glaronisia is 4 volcanic rocks that are accessible by boat. Worth the visit and enjoy this creation of the nature up close and swim in the breathtaking waters of Milos.



5. Chorio (Kimolos)

About region / Main cities & villages



Απόσταση:

by car 42.5km

Χρόνος:

1h28'

GPS: N36.7929382,

W24.574732100000006

Note: With the excursion boats you have the opportunity to visit Kimolos, browse for a while in the streets and swim in the beautiful beaches!!

1. Paleohori

About region / Main cities & villages



Note: Traditional taverns serving fresh fish, hot springs and fumaroles in the sea, in a riot of volcanic color palette of the surrounding hills, make Palaiochori a very attractive destination

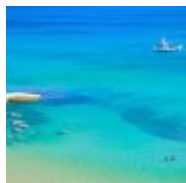
Απόσταση:

Start -

Χρόνος:

-

GPS: N36.675522571604645,
W24.51853110815432



2. Kipos (Garden)

Nature / Beaches



Απόσταση:

by car 14.8km

Χρόνος:

24'

GPS: N36.66226994933804,
W24.430468821777367

Note: Lovely beach but from here you will also get the boat that will take you to the best point, according to many, of the island! Kleftiko!



3. Kleftiko

Nature / Beaches



Απόσταση:

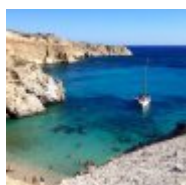
by car 21.2km

Χρόνος:

40'

GPS: N36.65077102056343,
W24.333394313110375

Note: Experience the magic of nature! There are many sea excursions that include a visit to Kleftiko!



4. Tsigrado

Nature / Beaches



Απόσταση:

by car 21.2km

Χρόνος:

40'

GPS: N36.66206339690452,
W24.469178462280297

Note: To enjoy the beautiful beach you have to get off the hill through a steep trail path covered with sand. The beach is not organized, but you can buy the bare essentials from the nearby beach Fyriplaka.



5. Firiplaka

Nature / Beaches



Απόσταση:

on foot 0.4km

Χρόνος:

05'

GPS: N36.66588452720266,
W24.465659404052758

Note: The Firiplaka has shallow turquoise waters, beach bar and sun beds with umbrellas. Here you can enjoy a cocktail after the Tsigrado and have fun in the beach bar!!

Milos

Access

By boat: Milos has ferry connection with Piraeus. The journey time varies depending on the type of boat. The journey with the fastest boat is 2 hours and 30 minutes long whereas the slower boat, which stops at other ports, is 7 hours. The frequency of service varies depending on the season. The island is connected to other islands of the Cyclades as well, such as Syros, Folegandros, Santorini, Paros, Naxos, etc., but also with Crete and Rhodes.

By plane: Milos has an airport with frequent connections to the airport of Athens Eleftherios Venizelos. The trip lasts 30 minutes.

Useful telephone numbers

Health Services

Health Center: (+30) 22870 22700, 22701

Adamadas Community Center: (+30) 22870 21755

Municipality

Municipality of Milos: (+30) 22873 60100

Police

Police: (+30) 22870 21204

Tourist Police: (+30) 22870 21378

Port Authority

Milos Port Authority: (+30) 22870 22100

Transportation

Milos Airport: (+30) 22870 22381

Adamadas Taxi: (+30) 22870 22219

Taxi in Triovasalos: (+30) 22870 21306

Other

Tourist Information: (+30) 22870 22445

Useful information

1. Marinas: Adamadas has a modern pier with water and fuel, free wireless internet, opportunity for shopping, drinks, ice, etc., restaurants, cafes, bus or taxi tours on land and access to health services (clinic).
2. Milos is an island which is ideally explored by a small boat. If you have access to one or you have one of your own, you will have the opportunity to visit untouched beaches and reach other nearby islands of the Cyclades.

Kimolos

Access

By boat: The island of Kimolos has ferry links with the ports of Piraeus, Syros and Milos while making intermediate stops at other islands. The journey from the port of Piraeus takes about seven to eight hours, from Syros around four hours from Milos even less reaching 10 to 25 minutes.

By plane: You can travel by air to the airport of Milos and then go to Kimolos. The flight from Athens takes about 30 minutes. To travel to Kimolos you should go to the port Apollonia by using taxi or a private vehicle.

Airport Tel: (+30) 22870 22090

Useful telephone numbers

Health Services

Emergency call: 166

Medical office: (+30) 22870 51222

Municipalities

Municipality of Kimolos: (+30) 22870 51218

Police Authorities

Emergency call: 100

Police station of Kimolos: (+30) 22870 51205

Port Authorities

Port authority of Kimolos: (+30) 22870 22360, 51071

Fire Services, Forestry

Emergency call: 199

Transportations

Bus station: (+30) 6973700033

Taxi: (+30) 6945464093, 22870 51552